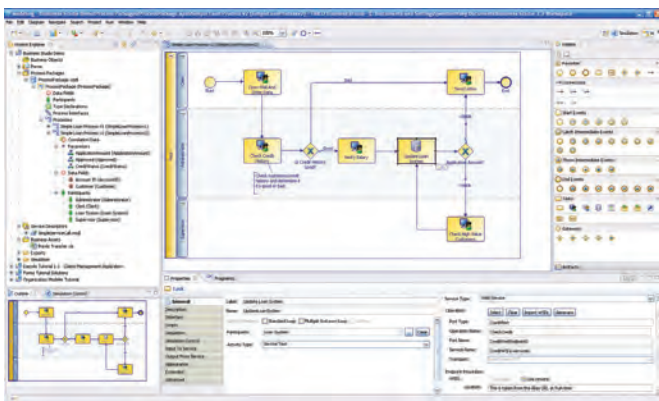


# TIBCO Business Studio

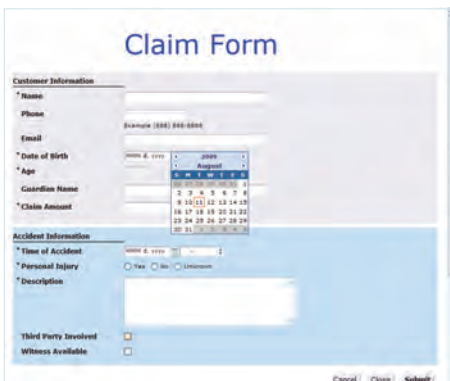
Business processes are one of the most important assets of a company. They are part of what gives a company its competitive advantage. Yet most processes are not managed as an asset. They are not well documented or frequently measured. Processes are also hard to change. Requirements get handed over to IT on paper. IT then spends months or years integrating and changing multiple systems to meet those requirements. By then, the processes need to be changed again.

TIBCO Business Studio™ is standards-based, award winning, and freely available business modeling software that lets business experts directly model and manage their business process assets and then lets IT implement and deploy those processes. It is Eclipse-based and serves as the common design environment for TIBCO's business process management (BPM) and service-oriented architecture (SOA) platforms. This means business experts can collaborate with architects and developers in the same environment to more rapidly deliver composite applications.

This agility offered by a streamlined multi-faceted tooling environment, coupled with an increased collaboration with IT, ensures rapid implementations that meet organizational goals and timeframes.



Best Commercial Eclipse Rich Client Platform Application, Eclipse Community Technology Awards 2007



With rich forms, business experts can design user forms that process participants will use to interact with the business process.

## AT A GLANCE

**TIBCO Business Studio** is standards-based business modeling software that enables business experts to model, deploy, and manage business processes. It is also the common Eclipse-based environment for building composite applications across TIBCO's BPM and SOA software.

## BENEFITS

- **Increased Business Agility:** An independent process layer enables business experts to change business processes without affecting underlying services and applications. This means the business can react quickly to changes in the market and competitive environment, reaping benefits from reduced time to market.
- **Enhanced Collaboration with IT:** A common modeling environment for BPM and SOA allows business and IT stakeholders to work collaboratively and ensure that the processes implemented reflect actual business needs. This unified tooling environment promotes reusability and transparency of varied asset definitions in the BPM and SOA efforts across the enterprise.
- **Greater Productivity:** The easy-to-use environment with built-in best practices and examples helps business experts get started quickly and be more productive. Advanced simulation capabilities reduce trial and error and ensure process optimization. A seamless model-to-execution experience bridges the gap between strategy and implementation.
- **Low Total Cost of Ownership:** By building process modeling on the widely adopted BPMN, UML, and XPD standards, and by providing support for third party tools such as IDS Scheer's ARIS and Microsoft's Visio, TIBCO Business Studio increases process portability and provides access to the skill sets you need to lower the overall cost of ownership for your BPM initiatives.

## ATTRIBUTES & CAPABILITIES

### Standards-Based Models

Business Studio allows users to build end-to-end business models that are compliant with the BPMN, XPD, and UML standards. It validates process models to help ensure they are standards-compliant.

### Out-of-the-Box Best Practices

An extensive BPMN fragment library and built-in workflow patterns help experts get ramped up and adopt best practices, which increases productivity. TIBCO also publishes industry-standard process models such as SCOR, DCOR, HR-XML, and Prince2.

### Business Expert and Process Developer Views

A process model is treated as a single entity with two unique views – one for business experts and one for process developers. Business experts can model processes, add forms to create mockups, run simulations, and associate relevant documentation. Process developers can implement further details such as calls to web services or back-end systems in the same environment. This ensures one consistent model from design to deployment.

### Web 2.0 (Ajax) Forms

Within Business Studio, users can employ wizards and a rich design palette to graphically design, view, and test Ajax forms for end users. These forms can be displayed in the out-of-the-box TIBCO iProcess™ Workspace client or quickly used in mashups with a variety of portals and custom clients.

### Business Object Modeler (BOM)

The BOM enhances model re-usability by allowing users to define in UML a vocabulary of core business objects and the relationships between them. It supports the creation of both concept models and object models, which further abstract data models from the process definition, driving reuse across processes.

### Organization Modeler

The structure of an organization is a key aspect in the behavior of business processes and how people perform work. Users can visually model the organizational structure, attributes, and relationships that underpin processes.

### Dynamic Process Support

Implement processes that react and adapt to a changing business environment. Any task can be defined as a process interface and defined at runtime. Dynamic sub-procedures allow users to assign sub-procedures at runtime. Graft steps enable external systems to dynamically add steps into the process. This enhances business responsiveness to unpredictable scenarios.

### Advanced Simulation and Reporting

Run simulations based on real data or sample data generated using a variety of algorithms. Properties such as cost, time, or resources can be associated with each process participant and activity. Simulations help validate processes and identify details such as costs, times, bottlenecks, or under-utilized resources. Built-in reporting enables users to generate reports on these details or compare different processes to assess the impact of any change.

### Seamless Model-to-Execution Experience for BPM+SOA

Business Studio is the model-driven development environment for TIBCO iProcess™ Suite for BPM and TIBCO ActiveMatrix® suite for SOA. Business experts can develop processes and deploy directly to the TIBCO iProcess™ Engine. They can also collaborate with IT and define service requirements based on the business processes. Architects and developers take these definitions and use TIBCO Business Studio to create Java services, or build composite services using TIBCO ActiveMatrix suite of SOA products and programming languages such as Java, .NET, and C/C++. This helps ensure that IT builds the right services that get reused across business processes.

**TIBCO Software Inc.** (NASDAQ: TIBX) technology digitized Wall Street in the '80s with its event-driven "Information Bus" software, which helped make real-time business a strategic differentiator in the '90s. Today, TIBCO's infrastructure software gives customers the ability to constantly innovate by connecting applications and data in a service-oriented architecture, streamlining activities through business process management, and giving people the information and intelligence tools they need to make faster and smarter decisions, what we call The Power of Now®. TIBCO serves more than 3,000 customers around the world with offices in more than 20 countries and an ecosystem of over 200 partners. Learn more at [www.tibco.com](http://www.tibco.com).

©2009, TIBCO Software Inc. All rights reserved. TIBCO, the TIBCO logo, The Power of Now, TIBCO Software, TIBCO Business Studio, TIBCO iProcess, and TIBCO ActiveMatrix are trademarks or registered trademarks of TIBCO Software Inc. in the United States and/or other countries. All other product and company names and marks mentioned in this document are the property of their respective owners and are mentioned for identification purposes only. 09-10324

## PLATFORM, STANDARDS AND SECURITY

Microsoft Windows (x86)

- Windows Server 2003
- Windows XP Professional
- Windows Vista

Linux

- RedHat
- SUSE

JRE 1.6.0

Firefox 2.0, Internet Explorer 6.0 and 7



[www.tibco.com](http://www.tibco.com)

Global Headquarters  
3303 Hillview Avenue  
Palo Alto, CA 94304

Tel: +1 650-846-1000  
+1 800-420-8450

Fax: +1 650-846-1005